

- LEGEND**
- SWITCH OPERATING SHAFT LOCATION
 - MOTOR OPERATOR LOCATION

ELECTRICAL DESIGN CLEARANCES		
MAX. SYSTEM VOLTAGE	DESIGN #1-G	DESIGN #2-#
138KV	50'	62'
69KV		
35KV		

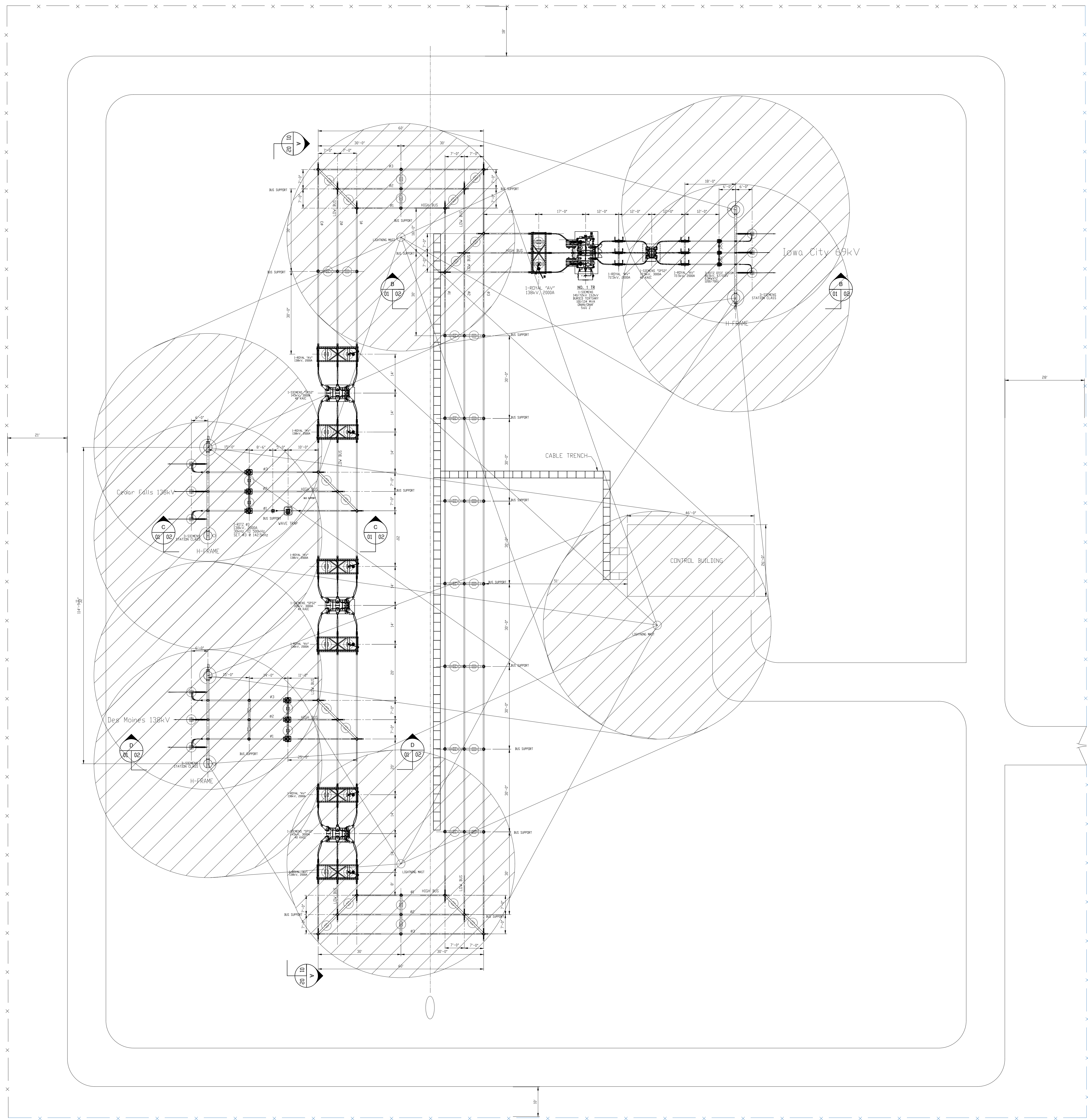
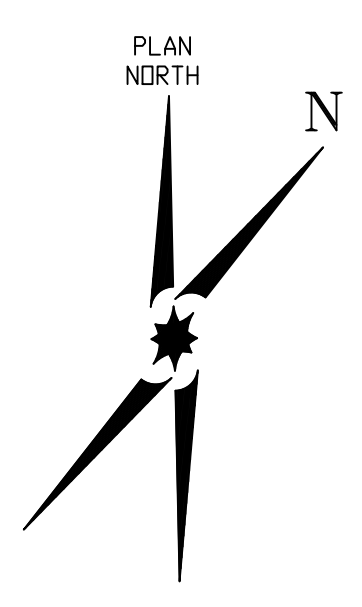
no.	date	by	revision
0	11/8/19	RH	Initial Design



Date: November 8, 2019
 Designed: ISU Senior Design
 Checked: XXX

CYCLONE SUBSTATION
 138KV SUBSTATION
 PLAN VIEW

Public Works Project No. contract
 SRDESIGN-1415
 DRAWING No. rev.
IASTATE-01-01 G
 File:IASTATE-01-01.DWG



- LEGEND**
- SWITCH OPERATING SHAFT LOCATION
 - MOTOR OPERATOR LOCATION

ELECTRICAL DESIGN CLEARANCES		
MAX. SYSTEM VOLTAGE	DESIGN #1-G	DESIGN #2-Ø
138KV	50'	62'

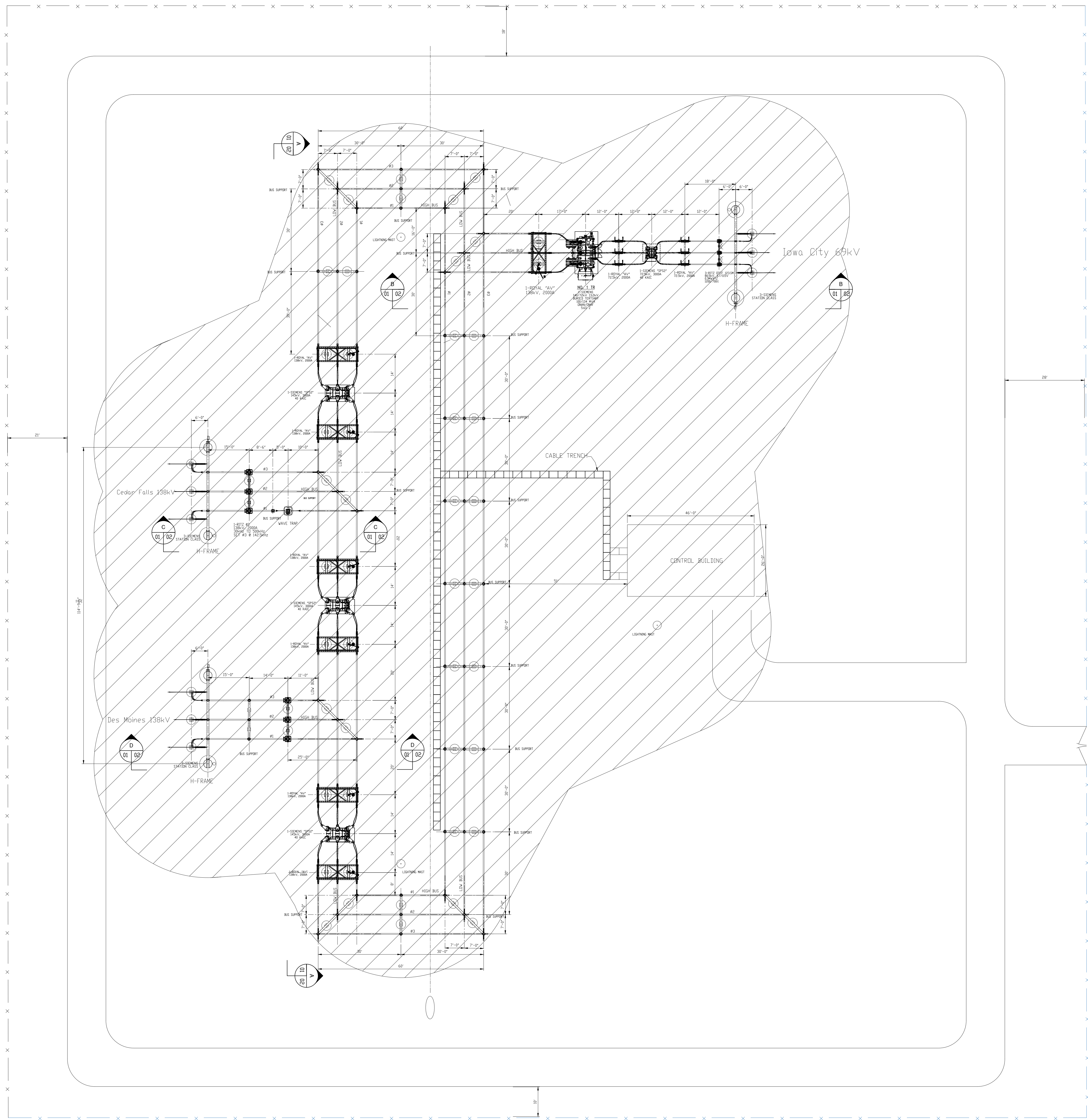
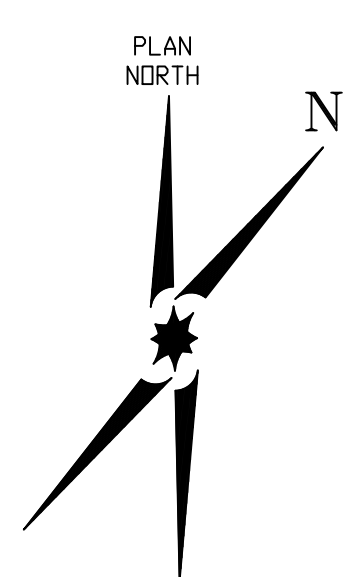
no.	date	by	revision
0	11/8/19	RH	Initial Design



Date: November 8, 2019
 Designed: ISU Senior Design
 Checked: XXX

CYCLONE SUBSTATION
 138KV SUBSTATION
 PLAN VIEW

Public Works Project No. contract
 SRDESIGN-1415
 DRAWING No. rev.
IASTATE-01-01 G
 File:IASTATE-01-01.DWG



- LEGEND**
- SWITCH OPERATING SHAFT LOCATION
 - MOTOR OPERATOR LOCATION

ELECTRICAL DESIGN CLEARANCES		
MAX. SYSTEM VOLTAGE	DESIGN #1-G	DESIGN #2-#
138KV	50'	62'

no.	date	by	revision
0	11/8/19	RH	Initial Design



Date: November 8, 2019
 Designed: ISU Senior Design
 Checked: XXX

CYCLONE SUBSTATION
 138KV SUBSTATION
 PLAN VIEW

Public Works Project No. contract SRDESIGN-1415
 Drawing No. IASTATE-01-01 rev. G
 File: IASTATE-01-01.DWG